

**Apartments for Sale in Città della Pieve (PG)**

**120.000 €**

**Ref: AP660**



**Size : 93 sqm**

**Rooms : 5**

**Bedrooms : 2**

**Bathrooms : 2**

**Garage : Single**

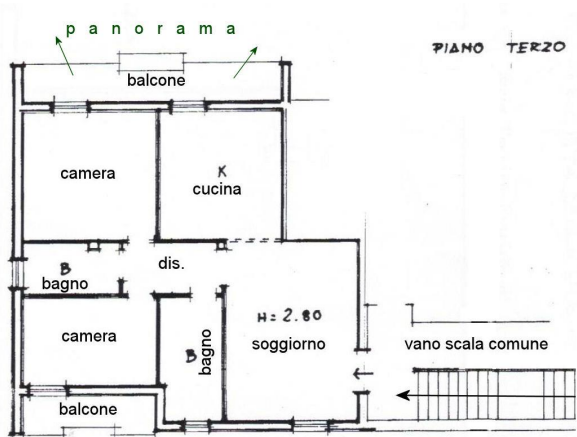
**Energy class : G**

**IPE : 300**

CITTA 'DELLA PIEVE (PG), Po' Bandino, 6 km from the A1 motorway exit of Chiusi / Chianciano Terme and 2 km from the Chiusi railway station, for sale third floor apartment (with lift) with private condominium square for parking. The apartment is very bright and has an area of 93 square meters, as well as 2 balconies, one of which is very panoramic with awning. It also has a garage of about 20 square meters. Entrance / living room, kitchen / dining room, utility room, 2 bathrooms, 2 double bedrooms. The apartment is part of a building that was built in the mid-80s and in a good general state of conservation (renovated in the floors of the day floor and a new bathroom). The property is equipped with an autonomous natural gas heating system, also has a chimney for the stove. It has split air conditioner in the corridor. Satellite TV system. The window frames are made of wood with double glazing, mosquito nets, PVC roller shutters. The flooring of the whole floor is single-fired. Request Euro 120,000 negotiable. (Energy Class: G and IPE > 300 KWh / m2year). Ref. AP660.













*IL CASTELLO IMMOBILIARE S.R.L.*  
*Corso Garibaldi, 18/20 - 53047 Sarteano (SI)*  
*P.IVA: 01070020522*  
*Tel: 0578 266836 / Email: [info@ilcastelloimmobiliare.it](mailto:info@ilcastelloimmobiliare.it)*