

**Commercial properties for Rent in Sinalunga (SI)**

**Upon request**

**Ref: LC25**



**Size : 69 sqm**

**Bathrooms : 1**

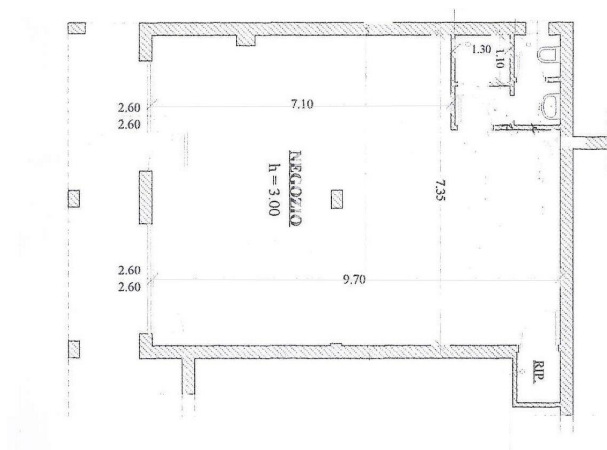
**Energy class : G**

**IPE : 300**

SINALUNGA (SI), Pieve area of easy access, shop for rent on the ground floor of about 69 square meters in a building from the 90s, without condominium fees, is in excellent general condition, bright and has a single room with two windows , bathroom, dressing room, dressing room and closet. Also suitable as a laboratory, medical clinic or office as it is not directly exposed to main roads. Easy parking in front. Aluminum frames with double glazing and electrically controlled gates. The flooring of the whole floor is in single-fired ceramic. Height of the rooms 3 meters. Previously heated with a heat pump, then it remains prepared. Private Negotiation. (Energy Class: G and IPE> 300 Kwh / m2year). Ref. LC25. Possibility also to buy it.







**IL CASTELLO IMMOBILIARE S.R.L.**  
 Corso Garibaldi, 18/20 - 53047 Sarteano (SI)  
 P.IVA: 01070020522  
 Tel: 0578 266836 / Email: [info@ilcastelloimmobiliare.it](mailto:info@ilcastelloimmobiliare.it)